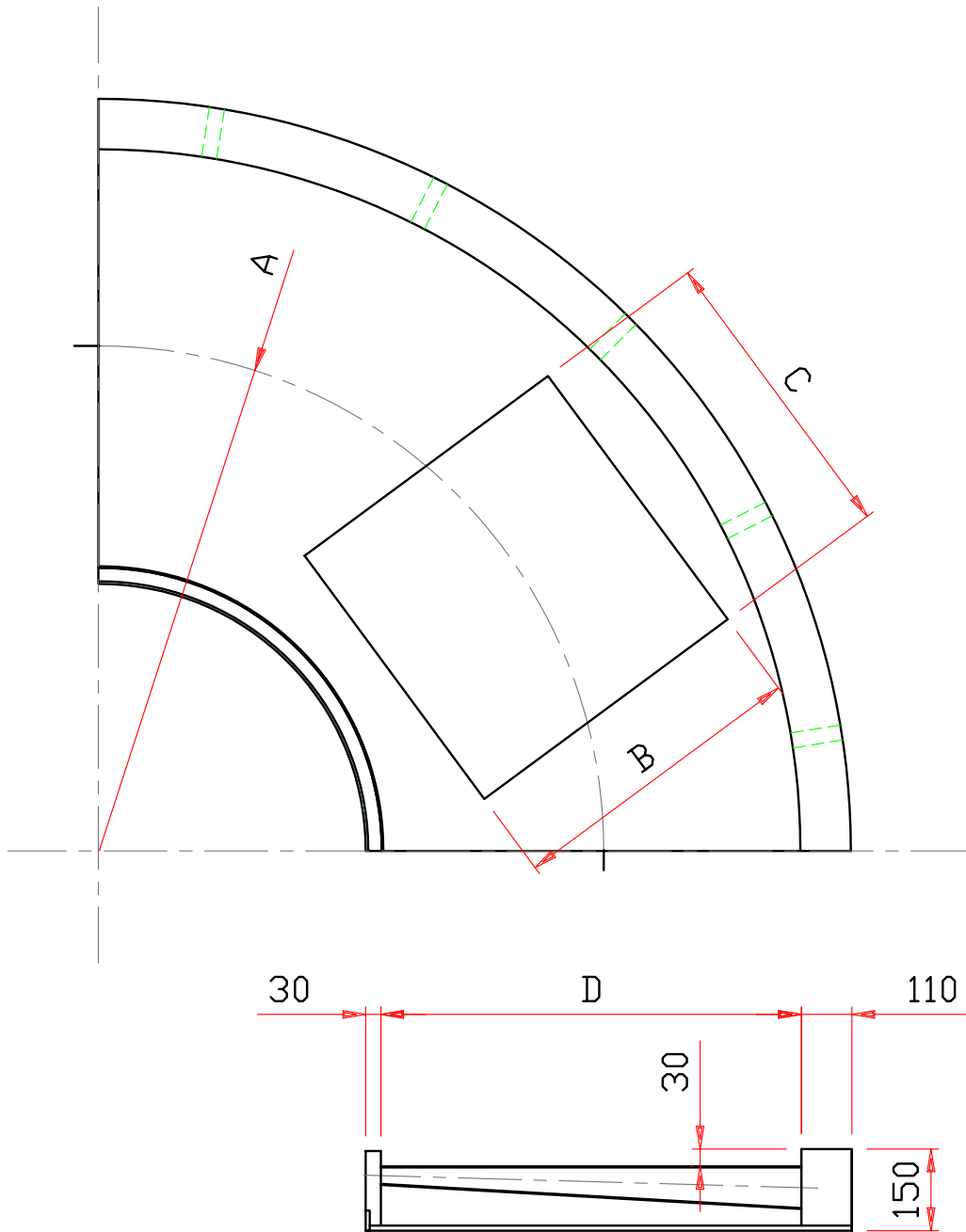


CURVE A NASTRO (Mod. CNA)



MODELLO	RAGGIO MEDIO (A)	FORMATO (B-C)	L (D)	PESO Kg	POTENZA kW	
CNA 1000/90°	1000	660 - 1000	840	100	0,37	
CNA 1400/90°	1400	900 - 1000	1040	165	0.55	
CNA 1600/90°	1600	1200 - 1200	1440	210	0.75	